

ABOUT

The act of drawing from life is the process through which Hugo Dalton discovers meaning in all of his works. It is also this process that generates the conceptual frame for his installations and sculptural works. Hugo studied at Goldsmiths College where he began to make work that was in dialogue with the architecture of its location. His open approach has led him to collaborate with well known institutions and collectors including the V&A Museum, London and Today Museum, Beijing.

VALUES

Direct engagement in the subject. Non-Narrative. Material experimentation. Collaboration

DESCRIPTIONS

One-Liner (100 Characters)

At the heart of each artwork is a moment drawn directly from life. His works evoke sensuality, minimalism, and movement.

Short (500 Characters)

Hugo Dalton draws directly from life, best known for collaborations with institutions such as the Royal Albert Hall, Today Museum Beijing and Sadlers Wells London. Critic Edward Lucie-Smith terms his work, "a rebellion towards elegance".

Long (250 Words)

Hugo begins every work by drawing directly from life with pencil and paper. In each drawing, he captures the energy of a given situation, and allows it to take on new life. Each of Hugo's artworks is an attempt to open up and extend the space of a specific location, both physically and conceptually. In this way, he bridges the gap between conceptual and applied art, making tangible the transcendent beauty of life.

"Drawing is the starting point for all my work. I like this minimalism of means as it still permits all possibilities and facilitates an open and direct exchange with the subject."

Hugo Dalton's first commission on graduation with First Class honours from Goldsmiths College was for the home of Kay Saatchi. Since then his works have been shown at the Today Art Museum, Beijing, the Carrousel de Louvre, Paris and the Victoria and Albert Museum London. He has collaborated with choreographer Christopher Wheeldon to create a stage set at Sadlers Wells Theatre, London and has permanent works in the Royal Albert Hall, Mercedes-Benz Stadium, Atlanta and Tiffany&Co New York.

Critic Edward Lucie-Smith termed his work 'a rebellion towards elegance...'

CONTACT

For high resolution of images please contact the studio:

Website: www.hugodalton.com

Instagram: @hugodaltonstudio

Email: info@hugodalton.com

Tel: +44 (0)7976432526

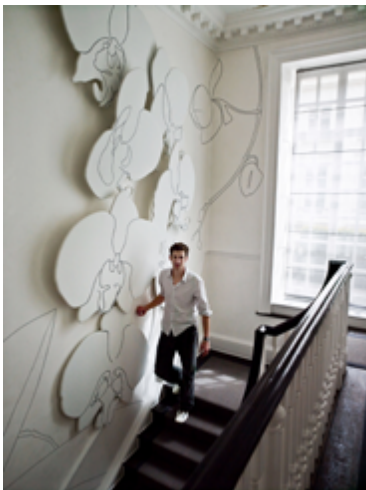
PORTRAIT IMAGES



01 Portrait Studio



02 Portrait Performance

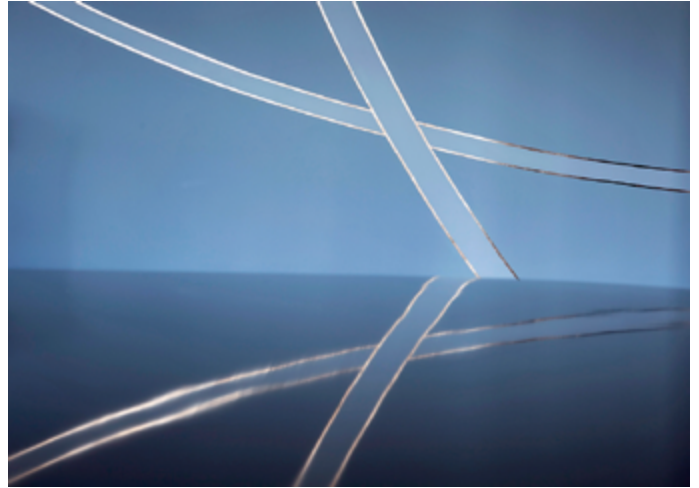


03 Portrait Artwork

WALLPAINTING IMAGES



01 Converstation House



02 Converstation House



03 Orchid House



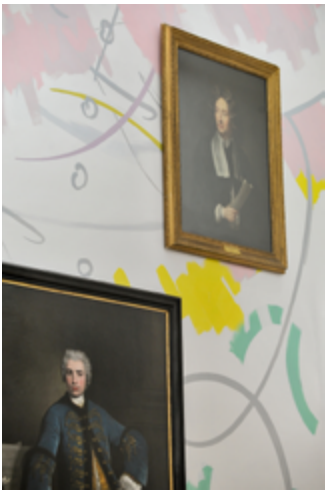
04 Orchid House



05 RCM Museum of Musical Instruments



06 RCM Museum of Musical Instruments



07 RCM Museum of Musical Instruments



08 Consession House



09 Consession House



10 Consession House

SCULPTURE IMAGES



01 Intermezzo



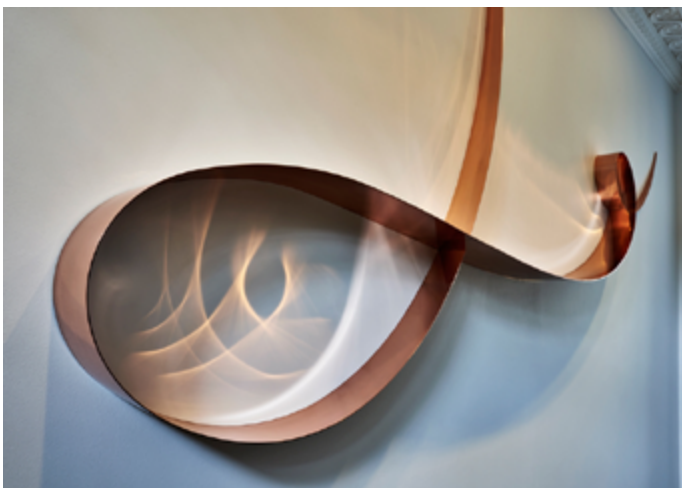
02 Intermezzo



03 Intermezzo



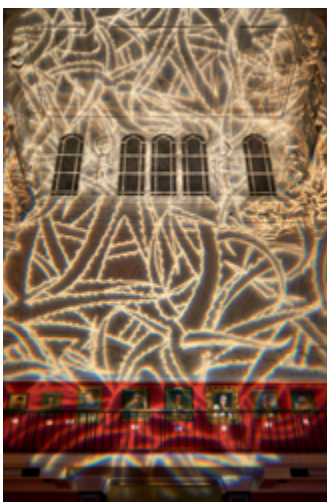
04 Intro



05 Intro



01 Fitzwilliam Museum



02 Fitzwilliam Museum



03 Fitzwilliam Museum



04 Victoria & Albert Museum



05 Lightdrawing in situ

PERFORMANCE IMAGES



01 Trinity Laban



02 Britten Theatre



03 Sadlers Wells

ENDS